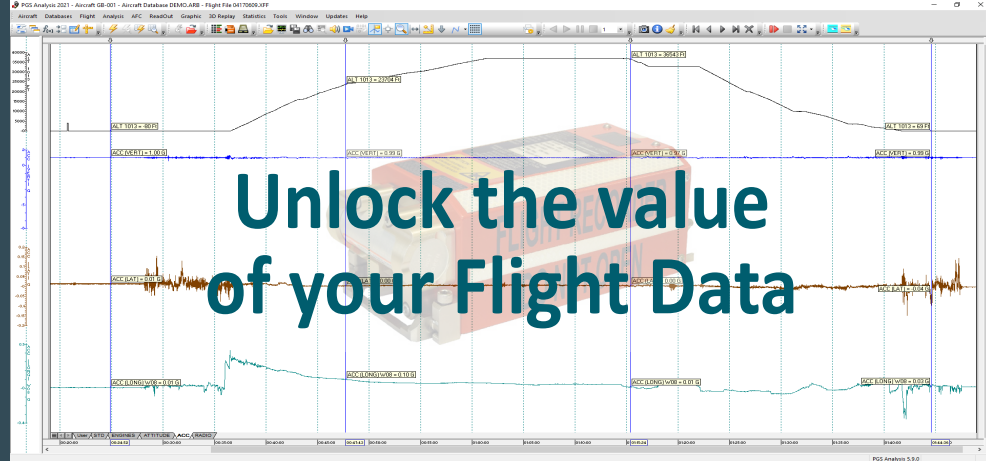


PGS Vision

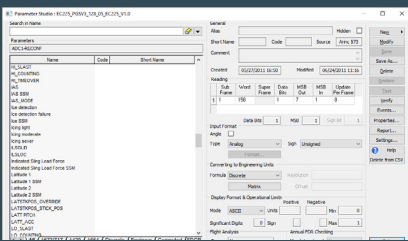


Unlock the value of your Flight Data

The PGS suite of software has been developed over 25 years to meet the highest requirements of operators in the processing of flight data. A continuous development effort of the software allows it to remain compatible with the new regulations and new aircraft/helicopter types.

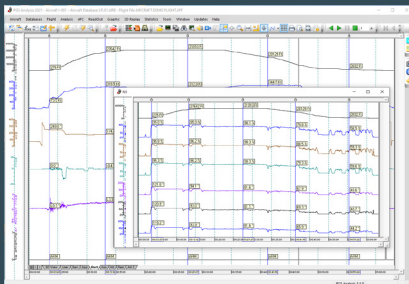
The PGS VISION is a turnkey software suite of tools that enables rapid and clear interpretation of flight data. A version specially designed to simplify the readout of FDR/CVR and the visualization of flight parameters with editors and tools that greatly simplify analysis tasks.

FDR/CVR/Datalink Download



It provides support for multiple Logical Frame Layouts, Fleet Management, multi-window visualizations and pre-defined readout procedures. This version also includes an audio decoder to convert CVR recordings to Microsoft WAV standard and a video player to replay camera recordings. This version is also capable of decoding Data Link into human readable messages.

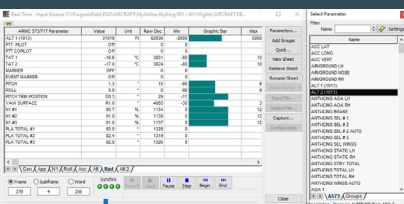
Graphical Study



Powerful tools for intuitive flight data visualizations:

- Instinctive handling of graph scales
- Multi-window management of the graphs display
- Features adapted to research and analysis: zoom up to the sample, markers, selection, and extraction of a part of the flight
- Flight data can also be presented in tabular form, exported in Microsoft Excel format, CSV or even KMZ
- Dedicated audio window : Up to 5 channels
- Data replay is synchronized between all windows (Flight data, audio, video and 3D visualizations)
- A collection of additional features available to the user to facilitate his work: Quick multi-criteria search, screen capture, video recorder.

Real Time Data



Real time display used for maintenance & troubleshooting purposes, this function displays in real time the data issued by the acquisition system (DAU) and transmitted to the flight recorder.

Presentation available in Mobile resizable and adjustable scales